



PROPERTY INFORMATION

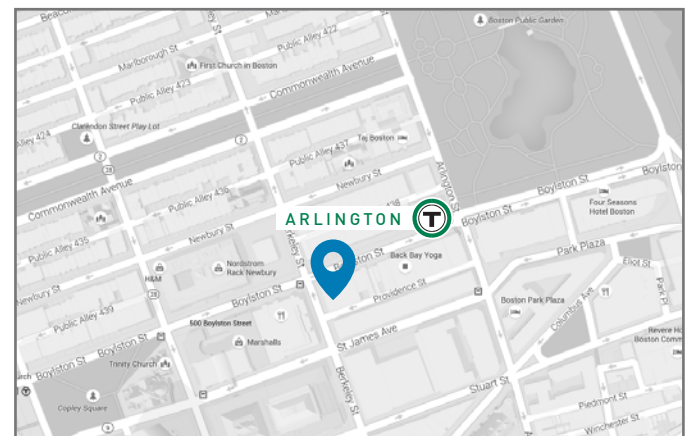
420 Boylston is an award-winning historic restoration owned and managed by A.W. Perry. Located in the heart of Boston's Back Bay, it is surrounded by numerous shops, restaurants, hotels, and adjacent to the Arlington Green Line T Station. Oversized windows provide abundant natural light and terrific views of Berkeley and Boylston Streets.

BUILDING FEATURES

- Elegant Lobby With Six-Story Atrium
- 24-Hour Security & Card Access
- On-Site Management
- Large Windows Throughout
- Bike Storage In Basement
- Men's & Women's Locker Rooms With Showers

LEASING OPPORTUNITIES

Size: **9,799 sf** | Floor: **3**

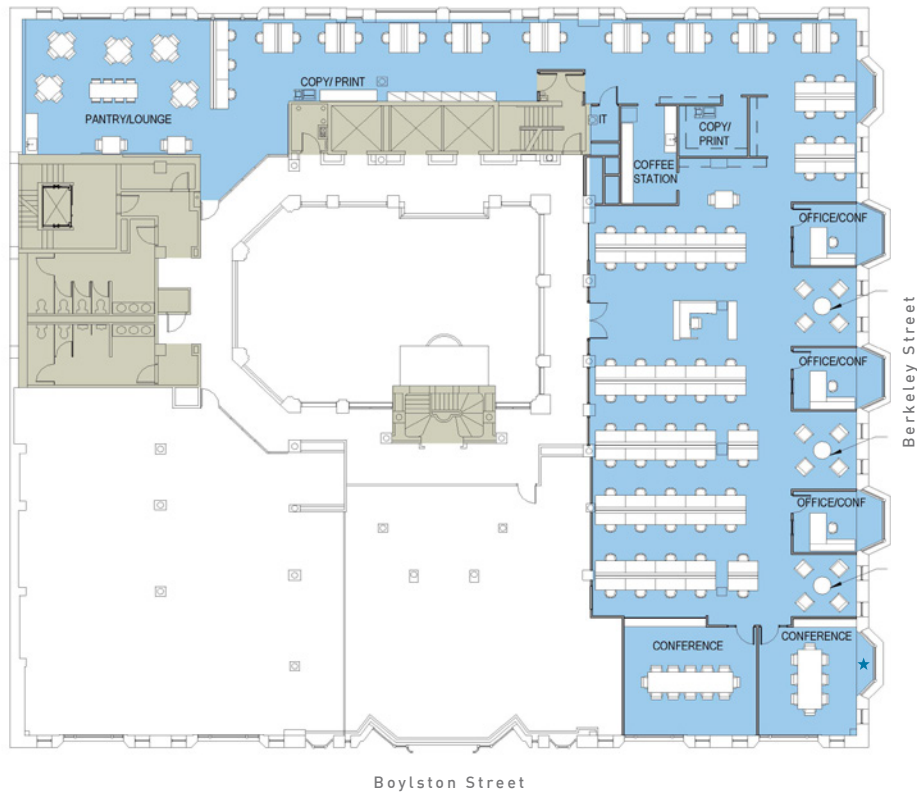


PERRY
BROKERAGE

Commercial
Real Estate
Services

Jon Gifford - Executive Vice President
617.542.8008
jgifford@perrybrokerage.com

3RD Floor Proposed Marketing Plan
9,799 sf



★ Amazing View From Corner Conference Room



PERRY
BROKERAGE

Commercial
Real Estate
Services

Jon Gifford - Executive Vice President
617.542.8008
jgifford@perrybrokerage.com