



## LEASING OPPORTUNITIES

Size: **4,700 sf** | Floor: **Lower Level**

Available Immediately

Term Through January 31, 2023

Asking Rate: **High \$20's psf**

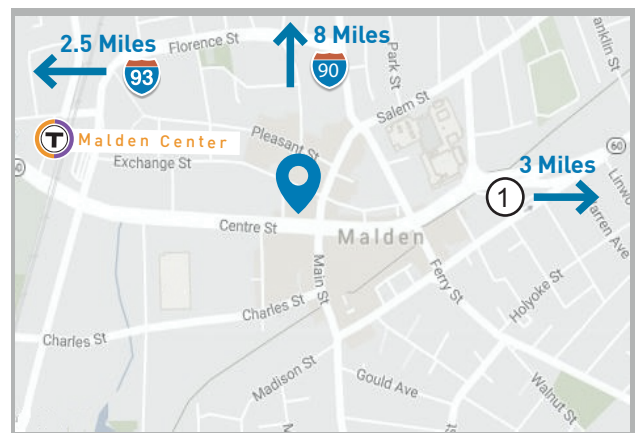
## PROPERTY INFORMATION

Located just 5 miles north of Boston, Commerce Place is a six-story, 170,000 sf, recently renovated office building owned by Preotle Lane and Associates LTD.

Commerce Place is conveniently near three major highways and is less than 0.5 miles to public transportation. This address offers immediate access to the MBTA Orange Line (Malden Center), Commuter Rail and major bus lines. Surrounded by numerous restaurants and area amenities with ample (structured) parking in the adjacent garage.

## FEATURES

- Accessible Loading / Unloading
- 1 Tailboard Loading Dock
- On-site Fitness Center & Cafe
- Some Furniture & Phone Systems May be Available
- Possible Uses Include Storage, Training, and Assembly



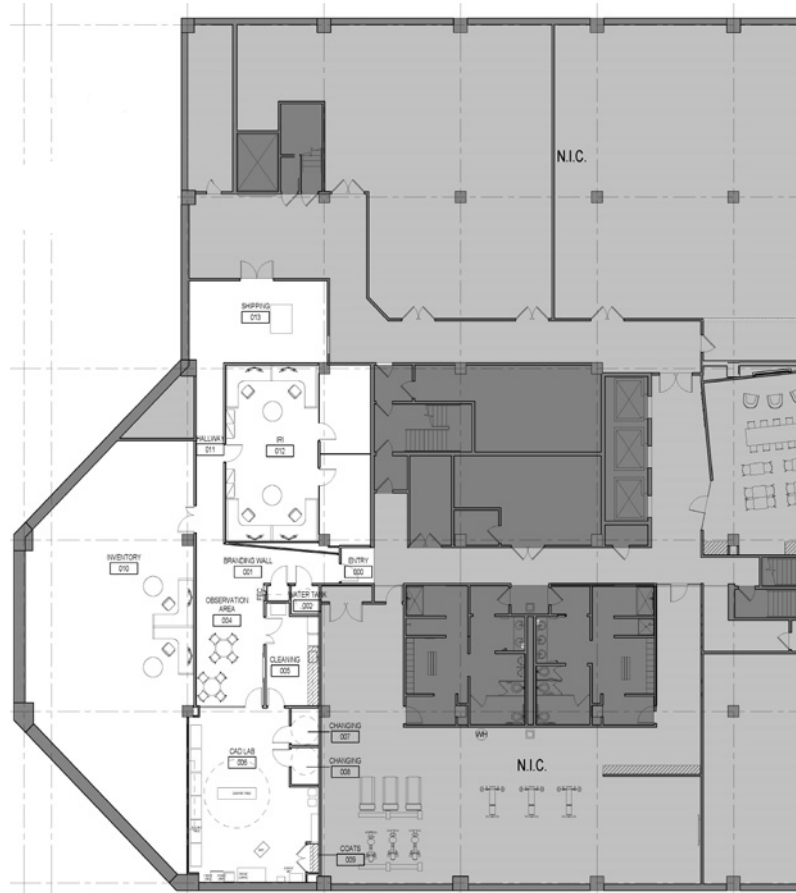
**PERRY**  
BROKERAGE

Commercial  
Real Estate  
Services

Jeremy Roy - Senior Vice President  
857.990.3522  
jroy@perrybrokerage.com

Tyler Hilson - Broker Associate  
857.990.3528  
thilson@perrybrokerage.com

Lower Level Floor Plan - 4,700 sf



**PERRY**  
BROKERAGE

Commercial  
Real Estate  
Services

Jeremy Roy - Senior Vice President  
857.990.3522  
jroy@perrybrokerage.com

Tyler Hilson - Broker Associate  
857.990.3528  
thilson@perrybrokerage.com